

Do I have wireless networking on my computer?

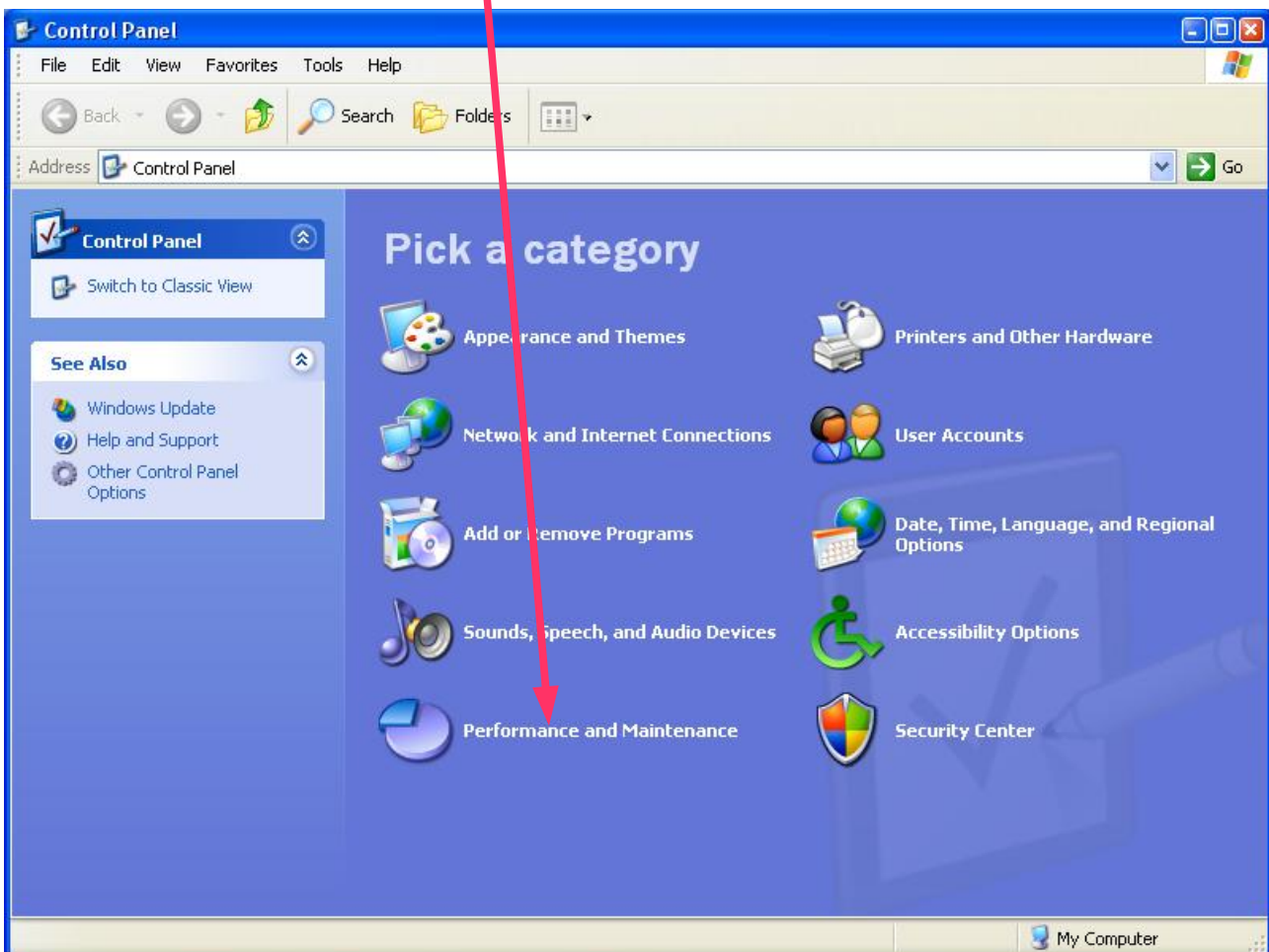
To find out, we are going to look at the hardware configuration

First, let's check the toolbar. If you have wireless set up, then you should see an icon like this:



If you don't see this, open the Control Panel: start->control panel

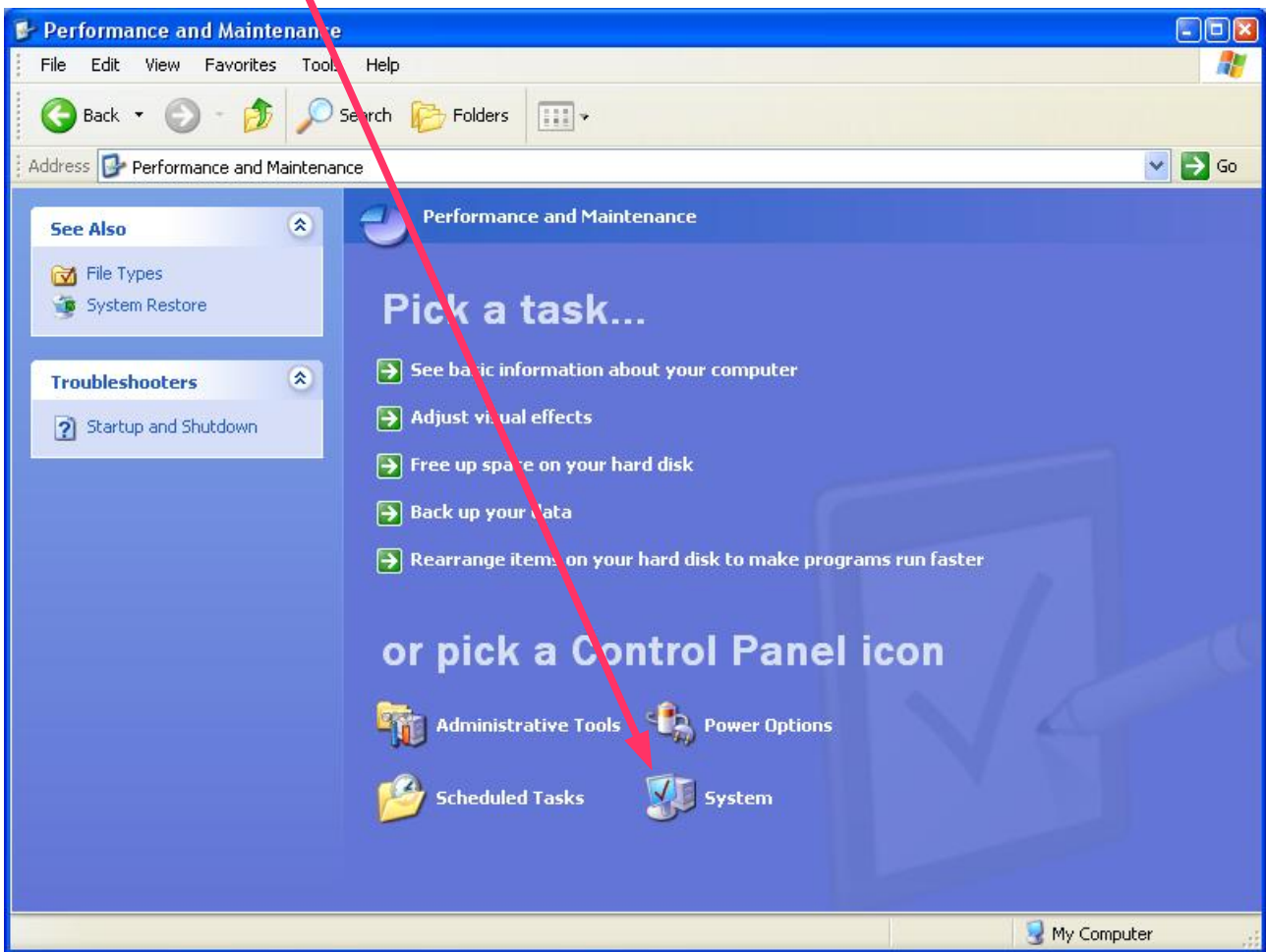
Now select 'performance and maintenance'



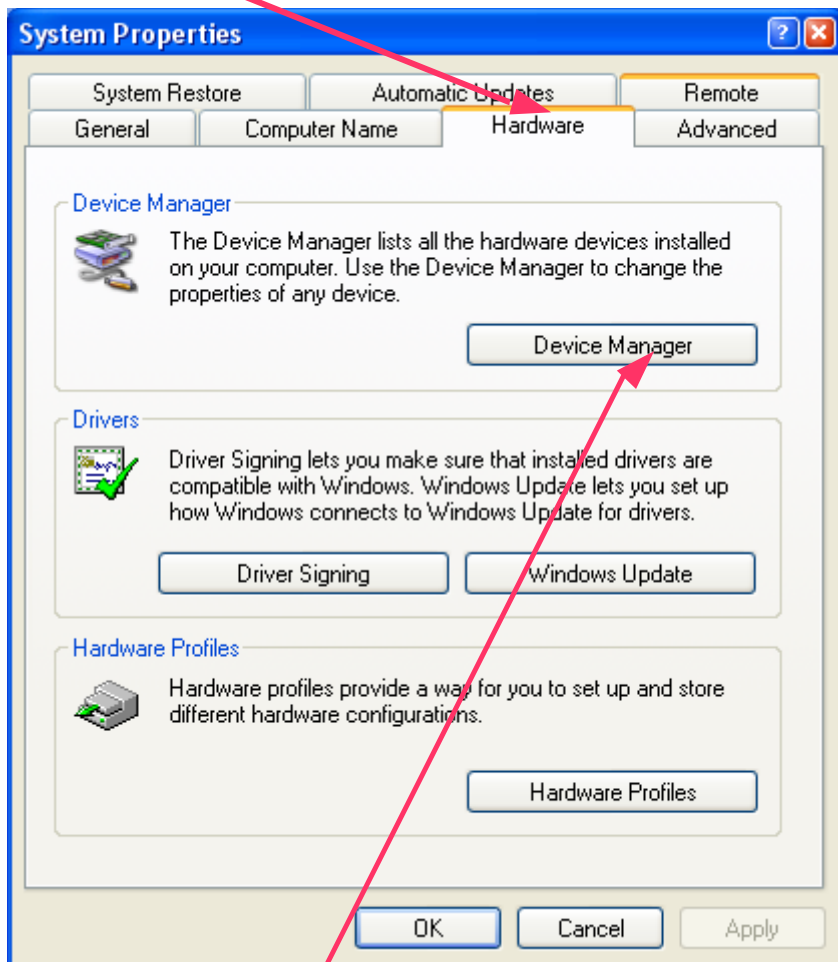
(If your control panel looks different, then select system directly)



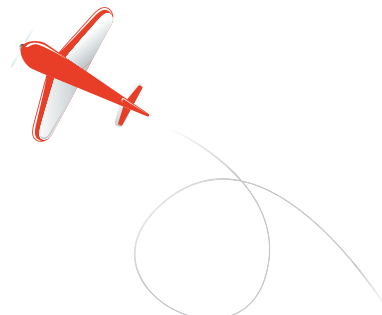
and then click on 'System'



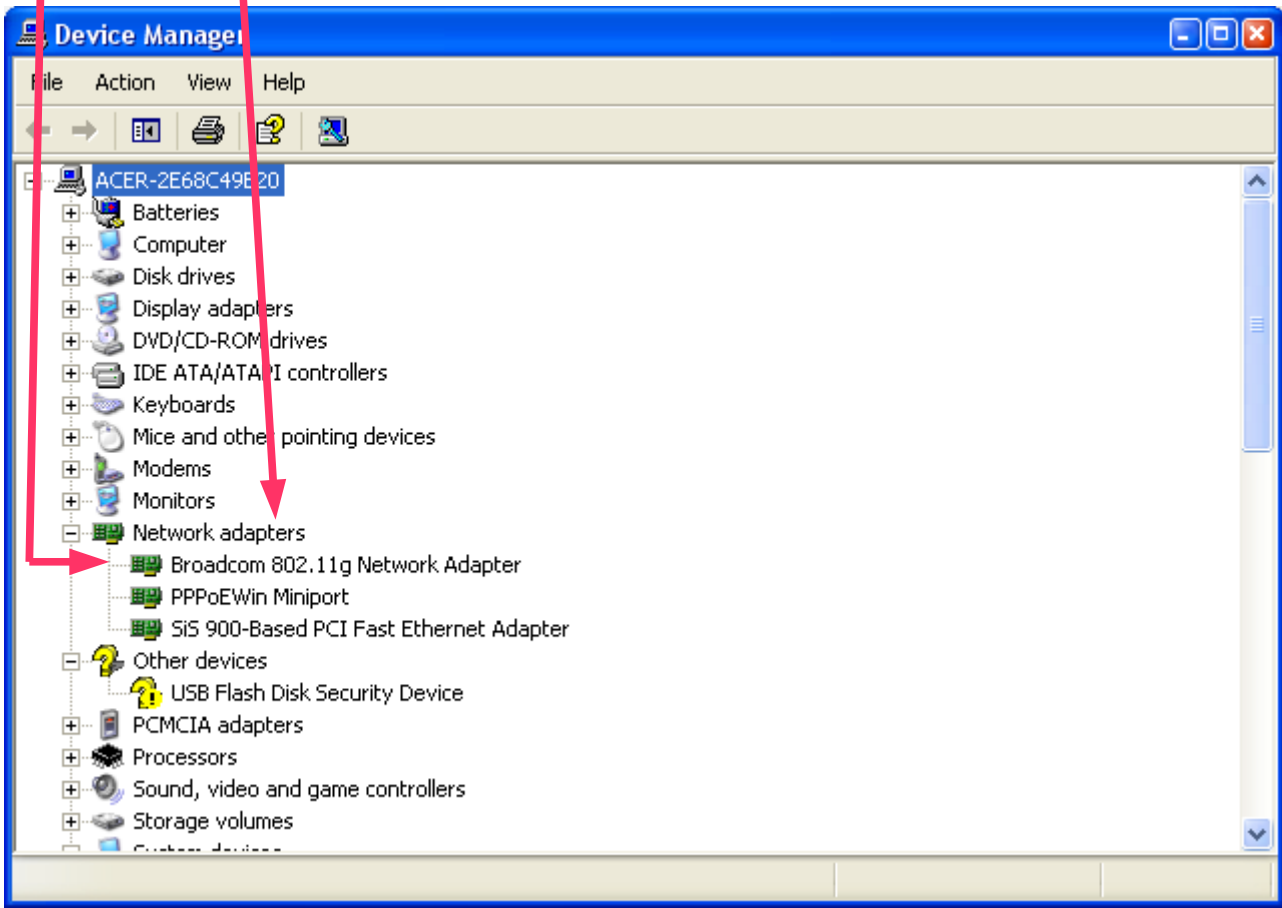
Next select hardware



and now 'Device manager'



Expand the network adapters section and look for a wireless adapter: they usually say wireless or 802.11. So now you know whether you have wireless



If your screen doesn't look like this, then select view-> devices by type.

If you don't have wireless, then you can buy a wireless adapter that plugs into a USB port to provide wireless connectivity. These look like flash drives.

