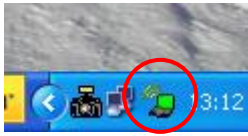
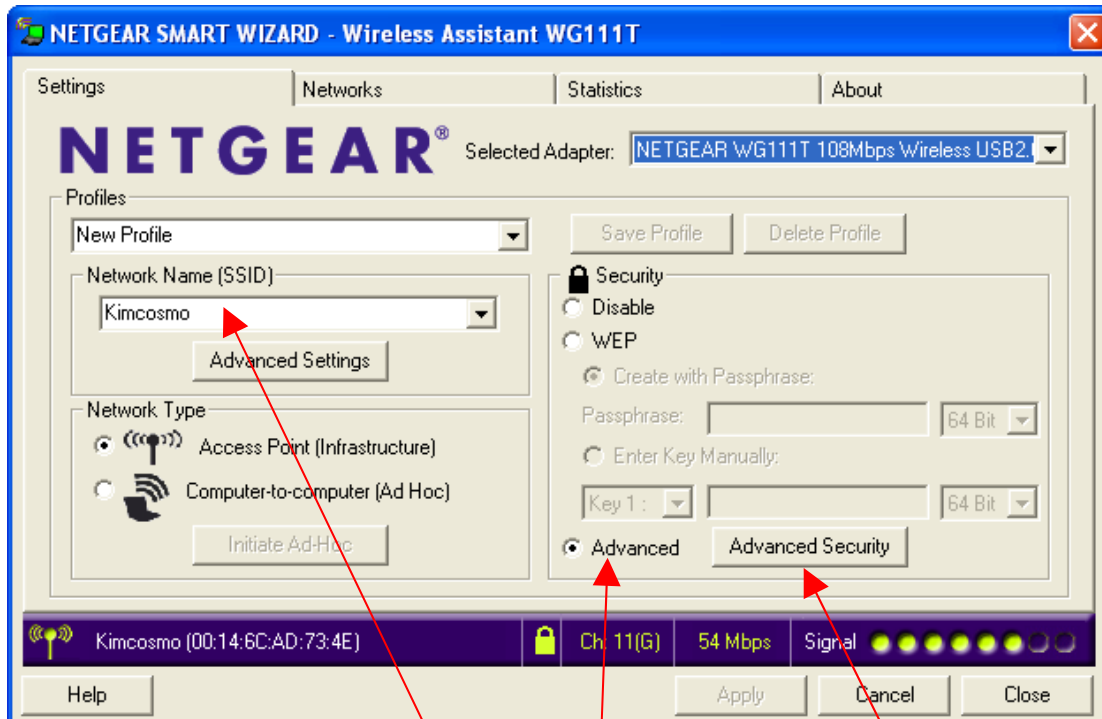


## Reconnect wireless using Belkin/netgear software

Open the Netgear assistant by clicking on the icon



to open it



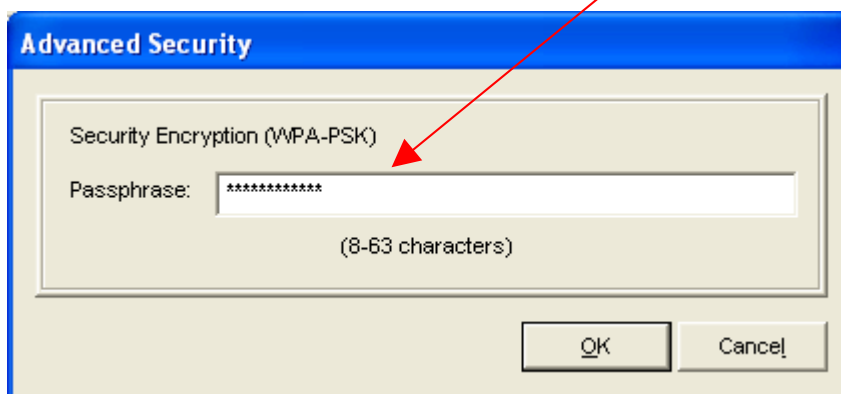
On the settings screen make sure:

your network is the network

and that you have advanced selected

Now click 'advanced security'

In the window that opens type your password



and the network should reconnect properly

Tel: 01865 748197 [john.batch@theflyingdoctor.biz](mailto:john.batch@theflyingdoctor.biz) [www.theflyingdoctor.biz](http://www.theflyingdoctor.biz)

The Flying Doctor, 12 Yeffly Drive, Littlemore, Oxford OX4 4XS

John Batch trading as The Flying Doctor

